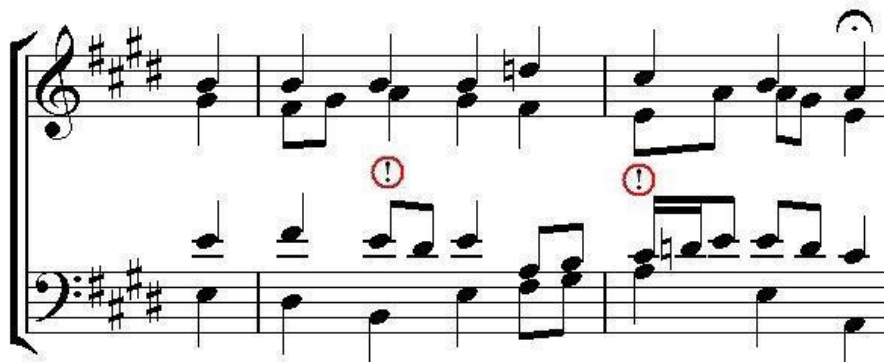
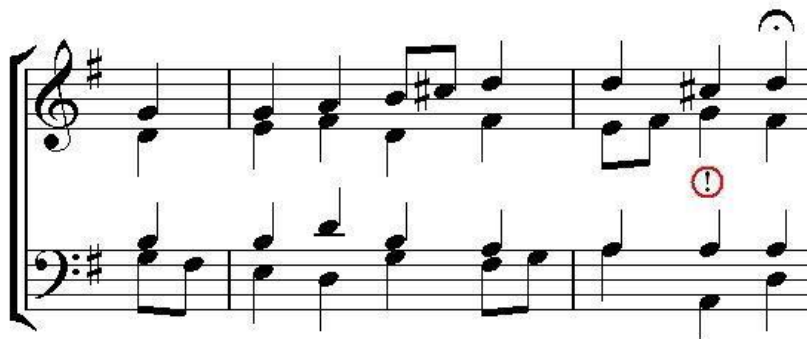


Example 1 (RM4, first phrase)



Musical score for Example 1 (RM4, first phrase) in G major. The score shows a modulation to D major. Red circles highlight the chromatic alterations in the bass line: a G# in the second measure and a C# in the fourth measure.

Example 2 (RM9, first phrase, slightly simplified)



Musical score for Example 2 (RM9, first phrase, slightly simplified) in G major. The score shows a modulation to D major. A red circle highlights the chromatic alteration in the bass line: a C# in the fourth measure.

Example 3 (RM29, first phrase)



Musical score for Example 3 (RM29, first phrase) in G major. The score shows a modulation to D major.

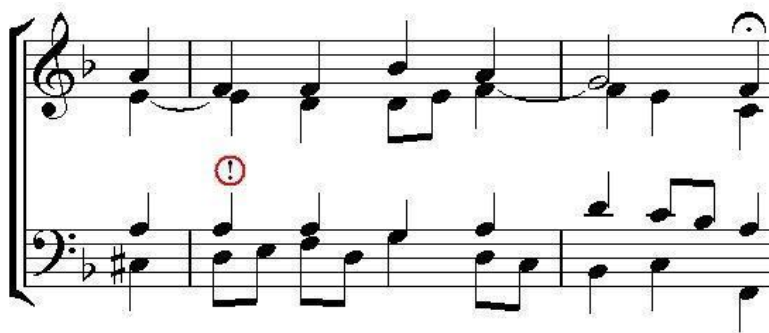
**Example 4 (RM4, second phrase)**

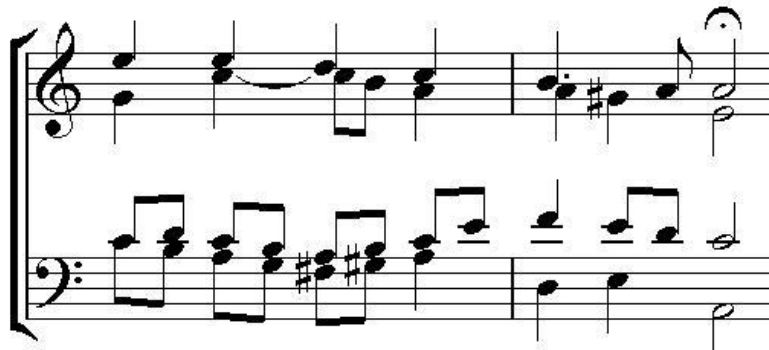



**Example 5 (RM222, first phrase)**



**Example 6 (RM26, third phrase)**



**Example 7 (RM48, third phrase, slightly simplified)****Example 8 (RM41, second phrase, slightly simplified)****Example 9 (RM39, first phrase)**

**Example 10 (RM30, third phrase)**

